

Electrosurgery



marLap[®]

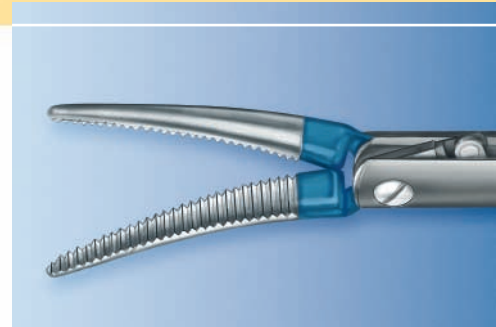
SAFE AND EASY OPERATING WITH THE
KLS MARTIN BIPOLAR INSTRUMENTS

KLS martin
GROUP

marLap[®] – Bipolar Coagulation in Laparoscopy

For many decades, KLS Martin has been known as a successful provider of HF surgical systems and instruments. In recent years, there has been a particularly strong increase in the demand for bipolar instruments. This is especially true for the field of laparoscopy, where a whole range of special bipolar instruments suitable for minimally invasive application is required.

The new marLap[®] system is KLS Martin's response to this growing need.



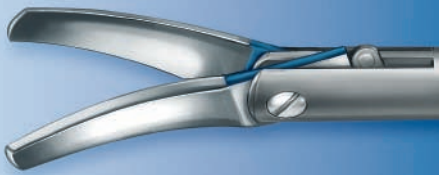
marLap[®]

marLap[®] Maryland
"Grasping forceps" exchangeable electrode,
curved, for dissecting and coagulating
Item no. 83-585-06

The Bipolar Application Technique

Bipolar coagulation is one of the most frequently used HF surgical techniques. Why? Because the high-frequency current takes a very short path through the patient's body, flowing directly from the instrument's active blade or jaw to the opposite (inactive) blade or jaw. Thus, only the treatment zone is actually affected by the electric current.

Compared with the monopolar technique, the energy requirements are significantly lower and no neutral electrode is needed at all. Thanks to these advantages, the bipolar application technique is considered a distinctly safe HF surgical method.



marLap® Cut

Scissor-type exchangeable electrode, curved, for mechanical cutting and simultaneous coagulation
Item no. 83-585-03



marLap® Clamp

“Grasping forceps” exchangeable electrode, fenestrated, for coagulating vessels and tissue bundles
Item no. 83-585-05



marLap® Clamp

“Grasping forceps” exchangeable electrode, non-fenestrated, smooth for coagulating vessels and tissue bundles
Item no. 83-585-07



83-585-03



83-585-05



83-585-06



83-585-07



83-585-00
340 mm, Ø 5 mm
marLap® handle with shaft

maxium®



Instruments for use with the maxium® System

marLap® instruments

83-585-00	marLap® handle with shaft, Ø 5 mm, 340 mm
83-585-03	marLap® Cut scissor-type exchangeable electrode, 340 mm
83-585-05	marLap® Clamp "grasping forceps" exchangeable electrode, fenestrated, 340 mm
83-585-06	marLap® Maryland "grasping forceps" exchangeable electrode, curved, 340 mm
83-585-07	marLap® Clamp "grasping forceps" exchangeable electrode, non-fenestrated, smooth 340 mm

Bipolar connecting cables

80-287-33	Connecting cable for KLS Martin, Berchtold, Aesculap systems, 3 m
80-287-53	Connecting cable for KLS Martin, Berchtold, Aesculap systems, 5 m
80-286-30	Connecting cable for Erbe systems (VIO, ICC, ACC), 3 m
80-286-50	Connecting cable for Erbe systems (VIO, ICC, ACC), 5 m
80-287-89	Connecting cable for Valleylab systems, 3 m
80-287-90	Connecting cable for Valleylab systems, 5 m
80-287-70	Connecting cable for Conmed, Codman, Valleylab systems, 3 m

HF generators

80-042-00	maxium® with socket module for KLS Martin accessories, "m" version
80-042-02	maxium® with socket module for international accessories, "i" version
80-042-04	maxium® with socket module for 5-mm accessories, "e" version

Carrier system

80-046-00	maxium® Cart
-----------	--------------

CE marking conform with 93/42/EEC

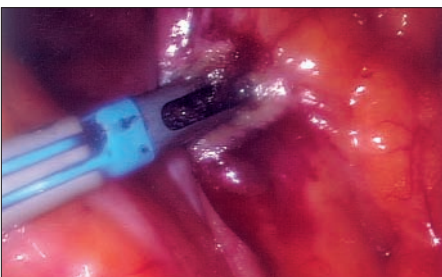
Innovative Technique



Endoscopy is a field of application where reliable hemostasis is of particular importance. The maxium® generator's "Macro Coag" current is particularly well suited for bipolar coagulation with the marLap® Clamp and marLap® Maryland inserts. For the non-fenestrated marLap® Clamp insert, we recommend using the EndoSeal current.



The maxium®'s Forfex current is simply ideal for use with the marLap® instruments because this special bipolar cutting current provides coagulation support when performing the cut. However, these instruments can also be used with the bipolar coagulation currents of other KLS Martin HF generators. As sufficient coagulation takes place prior to dissection, hemorrhages are prevented when cutting through vascular tissue.

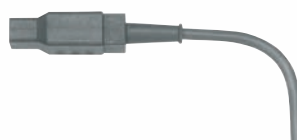


The fenestrated marLap® Clamp jaws allow you to grasp larger tissue bundles or vessels safely for subsequent coagulation – always with an excellent view of the surgical field. The non-fenestrated marLap® Clamp jaws are particularly suitable for coagulating fine and thin-skinned tissue structures. The blades or jaws of the Maryland insert are especially useful for fine dissection and the reliable coagulating of minor hemorrhages.



Following successful coagulation with the bipolar forceps, the vessel or tissue can be dissected using the marLap® Cut instrument or, for that matter, a commonly available pair of MIS scissors.

Here again, of course, you can use the standard bipolar cables.



KLS Martin Subsidiaries

KLS Martin France SARL

3, Rue Gambetta
68000 Colmar
France
Tel. +33 3 89 21 66 01
Fax +33 3 89 23 65 14
axel.siegelin@klsmartin.com

Martin Nederland/Marned B.V.

Visserstraat 9a
1271 VE Huizen
P.O. Box 278
1270 AG Huizen
The Netherlands
Tel. +31 35 523 45 38
Fax +31 35 523 53 48
info@martinnederland.nl

KLS Martin L.P.

11239-1 St. John's Industrial
Parkway South
Jacksonville, FL 32246
USA
Office phone +1 904 641 7746
Office fax +1 904 641 7378
Toll free +1 800 625 1557
sburke@klsmartin.com
www.klsmartinusa.com

Martin Italia S.r.l.

Via Paracelso, 18
Palazzo Andromeda, Ingresso 2
20041 Agrate Brianza (Mi)
Italy
Tel. +39 039 605 67 31
Fax +39 039 605 67 42
info@martinitalia.it

Nippon Martin K.K.

6 Fl., 4-6-16 Hiranomachi
541-0046 Chuo-ku,
Osaka 541-0046
Japan
Tel. +81 6 62 28 90 75
Fax +81 6 62 28 90 76
info@n-martin.com

Orthosurgical Implants Inc.

12244 SW 130 Street
Miami, FL 33186
USA
Office phone +1 305 969 4545
Office fax +1 305 969 4546
Toll free +1 888 305 4559
sales@orthosurgical.com
www.orthosurgical.com

Gebrüder Martin GmbH & Co. KG

A company of the KLS Martin Group
Ludwigstaler Str. 132 · D-78532 Tuttlingen
Postfach 60 · D-78501 Tuttlingen
Tel. +49 7461 706-0 · Fax +49 7461 706-193
info@klsmartin.com · www.klsmartin.com