

marVac®



marVAC® – The innovative system
for efficient smoke evacuation

*Enhanced visibility and maximum safety at the
operating site – surgical smoke is a trouble of the past!*

- Effective
- Ergonomic
- Safe



KLS Martin has a huge expertise in laser- and electrosurgery. With the innovative smoke evacuation system marVAC®, KLS Martin is setting a new standard in the evacuation of surgical smoke.

In the recent years the demand for devices with the possibility to extract the smoke directly from the OR field has grown. The smoke evacuator marVAC® in combination with our innovative high-frequency generators are reliable partners in your operating theatre.

Convince yourself!

marVAC®

The new smoke evacuation system marVAC® from KLS Martin provides highest level of safety, setting highest ergonomic standards

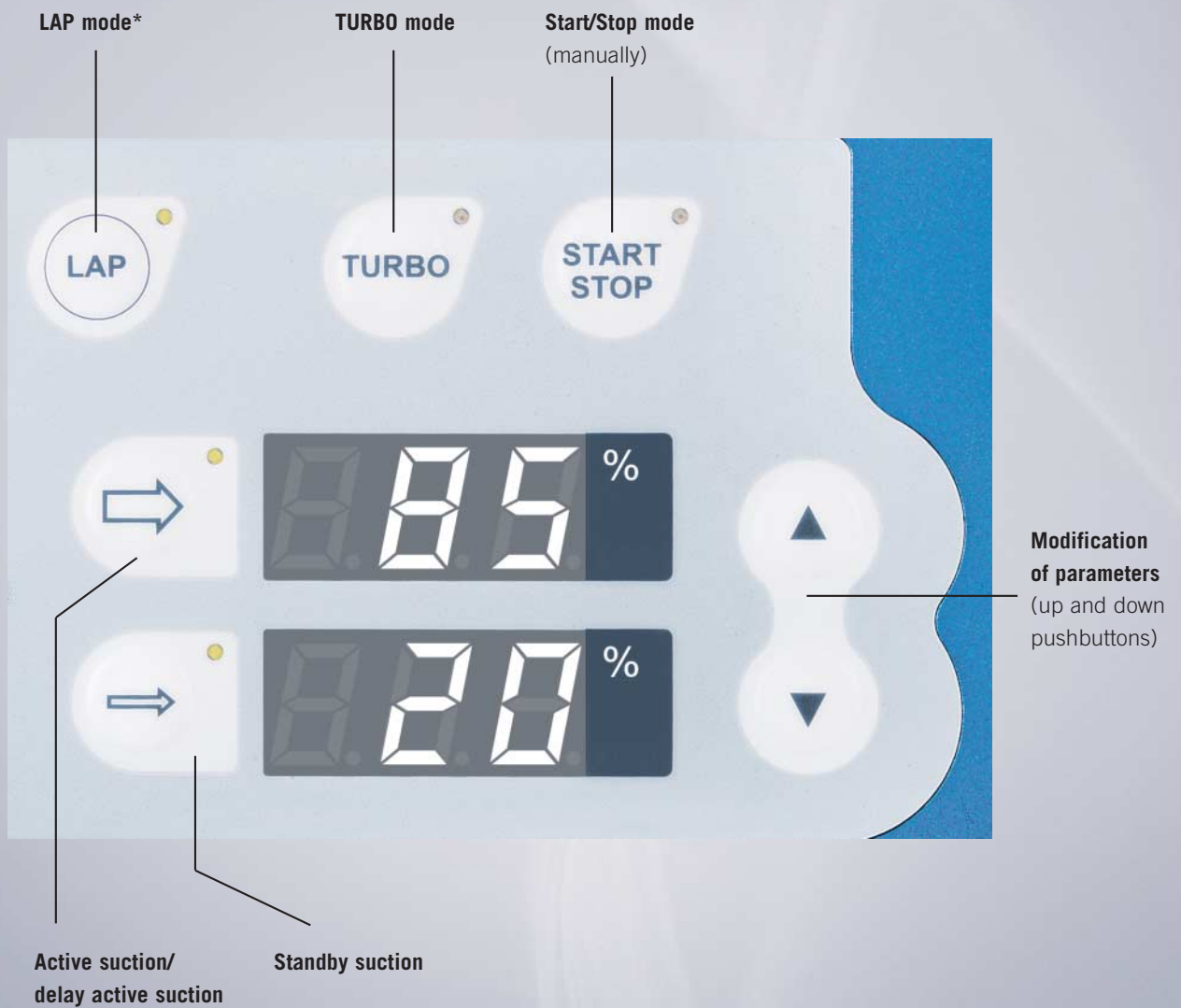
The advantages at a glance

- Simultaneous evacuation to high-frequency activation
- Individual parameters can be memorized in the user program of the maxium®
- Extended filter-capacity due to special filter technology
- Two suction hoses can be connected, each individually or simultaneously
- TURBO mode
- LAP mode
- Obstruction control
- Connection to central suction device possible

The smoke evacuator marVAC® offers reliable protection from particles, viruses, gases and carcinogenic substances capable of invading the lung. When used in automatic mode, the smoke evacuator is only active when needed, triggered by HF- or laser activation.

Easy selection and adjustment of parameters

marVAC®





TURBO Mode

Huge quantity of smoke can be eliminated effectively from the OR field.



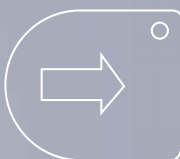
LAP Mode*

Specially designed for laparoscopic procedures; suction parameters will be automatically limited and the reflux of gas will be reduced to a minimum.



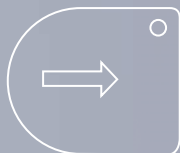
START/STOP

Alternatively, the smoke evacuator can also be activated manually.



Active suction/standby suction

Active suction, stand-by suction and delay time can be selected as required before and during the surgical procedure.



These parameters can be easily adjusted by pressing the up and down buttons.



Modification of parameters

(up and down pushbuttons)

* only when ordering marVAC® with LAP mode

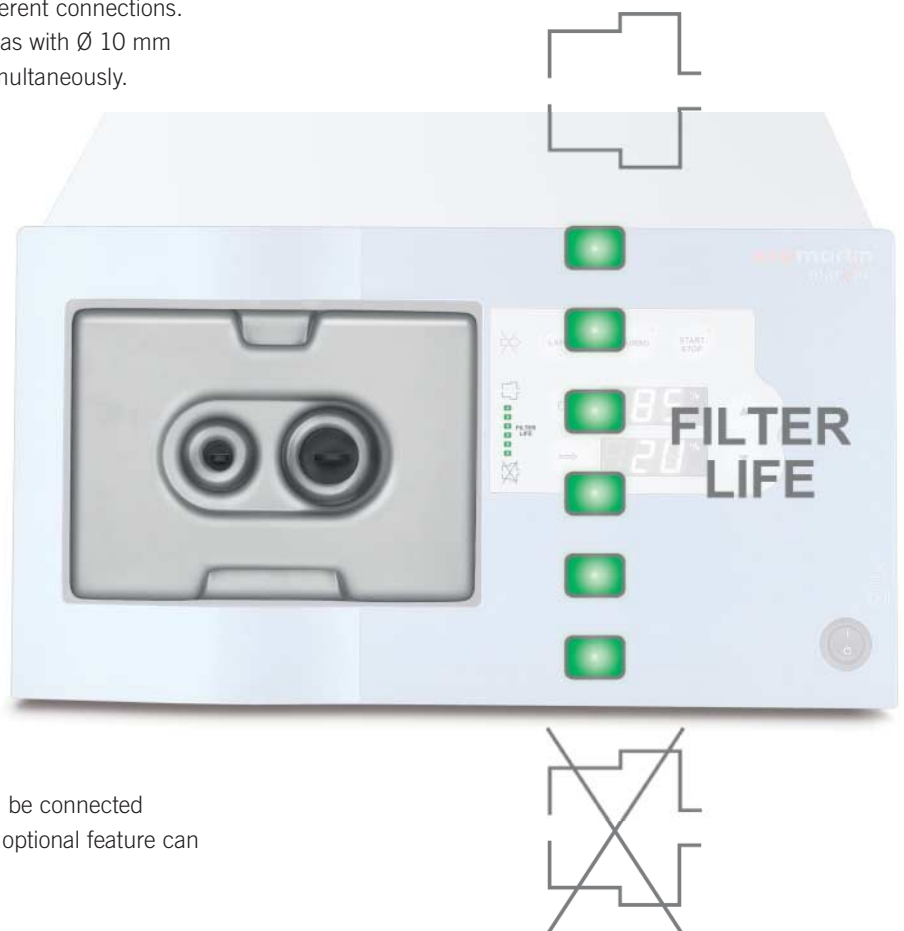
The specially designed filter system which corresponds to ULPA standard provides safe and effective protection in the operating theatre. The large inner-filter-surface provides a long-lasting lifetime.*

Changeable main filter unit



The main filter unit provides two different connections. Suction tubes with \varnothing 22 mm as well as with \varnothing 10 mm can be connected individually or simultaneously.

The filter status will be measured permanently and shown on the indicator. A required filter change will be displayed by the smoke evacuation system, early in advance.



If required, the smoke evacuator can be connected to a central-OR-suction system. This optional feature can be ordered on request.

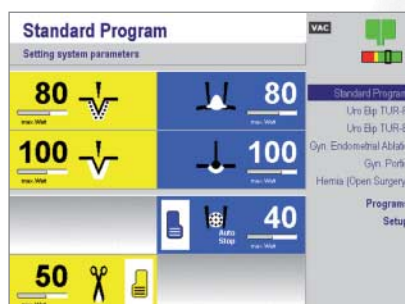
* ULPA = Ultra Low Penetration Air

The HF-generator as well as the smoke evacuation system can be positioned on a specially designed trolley. Alternatively, the system can be placed on a pendant.

maxium® & marVac® & maxium® Cart II

User-friendly set-up of parameters via MCB (= Martin-Communication-Bus)

The parameters for the marVAC® can be selected and adjusted through the HF generator maxium® and memorized in the user-program. *)



maxium®



* Please consider that maxium® HW06 and software V3.398 are required.

High Efficiency –

Surgical smoke can be extracted directly from the surgical site, where it is created.

KLS Martin offers a wide range of accessories for the elimination of surgical smoke created from electrosurgery or medical laser systems.

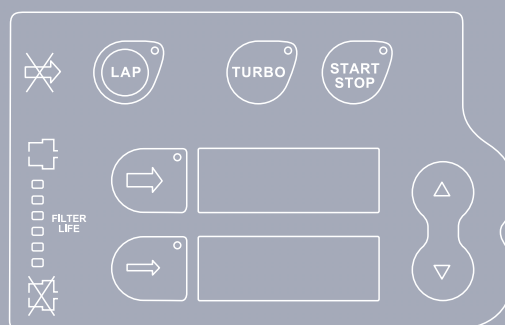
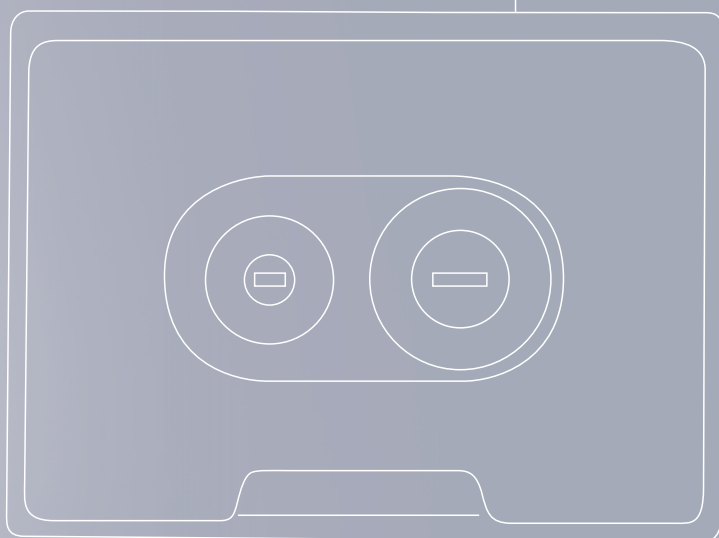
Various clip-on attachments offer reliable protection from surgical smoke.



80-060-03-04

(Packaging unit = 12 pieces)

Electrode handle with electrode Ø 2.4 mm,
with attached clip-on applicator, sterile,
flexible tubing length = 3 m,
suction hose connection Ø = 22 mm



Moreover KLS Martin provides a solution where a disposable clip-on applicator can be attached to a reusable electrode handle.



80-060-02-04

(Packaging unit = 12 pieces)

Clip-on applicator, sterile,
flexible tubing length = 3 m,
suction hose connection $\varnothing = 22$ mm,
attachable for KLS Martin electrode handles
80-217-xx-04, 80-210-12-04*

* Electrode-handle needs to be ordered separately.
Please find more accessories on page 10.

Ordering information for Smoke evacuation system marVAC® and accessories

Item No.	Product Description
80-060-00-04	Smoke evacuation system marVAC® 220–240 V incl. main filter unit (item 80-060-01-04) and fixation kit for maxium®
80-060-00-10	Smoke evacuation system marVAC® 100-127 V incl. main filter unit (item 80-060-01-04) and fixation kit for maxium®
80-061-00-04	Smoke evacuation system marVAC® with LAP-Mode 220-240 V, incl. main filter unit (item 80-060-01-04) and fixation kit for maxium®
80-061-00-10	Smoke evacuation system marVAC® with LAP-Mode 100-127 V, incl. main filter unit (item 80-060-01-04) and fixation kit for maxium®

Item No.	Individual components
80-060-01-04	Main filter unit for smoke evacuator marVAC® (ULPA standard)
80-811-50-04	Single-pedal foot switch for manual activation
80-060-06-04	Adapter for connection to a central suction (Ø 22 mm)

Item No.	Connection options for automatic operation (HF-generator or laser)
80-091-01-04	MCB connection cable to connect maxium® and marVAC®
80-060-05-04	Adapter for mains current detection (ISA-connection), incl. connecting cable
80-091-02-04	Connection cable ME MB2/3 with marVAC®

Item No.	Accessories and Consumables
80-060-02-04	Clip-on applicator, sterile, disposable, flexible tube length 3 m, Ø 22 mm for reusable electrode handles KLS Martin 80-217-xx-04 and 80-210-12-04 (packaging unit = 12 pieces)
80-060-03-04	Clip-on and electrode handle, Ø 2.4 mm, sterile, disposable, flexible tube length 3 m, Ø 22 mm (packaging unit = 12 pieces)
79-225-02-04	Funnel, flattened on one side, with Ø 22 mm connection, can be autoclaved 50 times at max. 134°C (273°F)
79-225-03-04	Plastic suction tube with cone connection for suction hose Ø 22 mm, can be autoclaved 50 times at max. 134°C (273°F)
79-225-04-04	Air hose Ø 22 mm, 2.1 m long, multi-use; can be autoclaved 50 times at max. 134°C (273°F)
79-225-05-04	Prefilter (HEPA) with Ø 22 mm connections (m/f), sterile, single use (packaging unit = 50 pieces)
79-225-06-04	Hose connector, straight, Ø 22 mm (female) to Ø 10 mm (male); can be autoclaved 50 times at max. 134°C (273°F)
79-225-07-04	Hose connector, straight, Ø 22 mm (female) to Ø 22 mm (male); can be autoclaved 50 times at max. 134°C (273°F)
79-225-08-04	Air hose Ø 22 mm, 3.0 m long, multi-use; can be autoclaved 50 times at max. 134°C (273°F)
79-225-09-04	Air hose Ø 10 mm, 2.0 m long, multi-use; can be autoclaved 50 times at max. 134°C (273°F)

marVac®



Technical specifications

Power supply	100-240 V ± 10%; 50/60 Hz
Appliance air flow	> 750 l/min
Power input	< 500 W / 740 VA
Activation	Automatic activation, front-panel button, optionally by foot switch
Interfaces	Foot switch, MCB (Martin Communication Bus), USB Mains current detection (adapter)
Protection class	I
Classification acc. to MDD	I
Type of applied part	CF; defibrillation-proof
Main filter	ULPA efficient 99.9999% @ 0.1 micron for tube size Ø 22 mm and Ø 10 mm Filter lifetime: 40 hours. Filter change will be indicated at the unit.
Weight	Smoke evacuation system marVAC®, 220-240 V: 10.0 kg Smoke evacuation system marVAC® with LAP mode, 220-240 V: 11.0 kg Smoke evacuation system marVAC®, 100-127 V: 12.4 kg Smoke evacuation system marVAC® with LAP mode, 100-127 V: 13.4 kg
EMI	Keeps limits according to EN 55011 and IEC 60601-1-2 Immunity according to IEC 801
Dimensions	Width 390 mm Height 218 mm Depth 460 mm (with main filter)
Environmental conditions for transportation and storage	Ambient temperature -25°C to +70°C (-13°F to 158°F) Relative humidity 10% to 100% Atmospheric pressure 500 hPa to 1060 hPa
Environmental conditions for operation	Ambient temperature +10°C to +40°C (+50°F to 104°F) Relative humidity 30% to 75% Atmospheric pressure 700 hPa to 1060 hPa
CE-marking: conform with 93/42/EEC	Classified acc. to MDD (Medical Device Directive)

KLS Martin Group

Karl Leibinger GmbH & Co. KG

78570 Mühlheim · Germany
Tel. +49 7463 838-0
info@klsmartin.com

KLS Martin GmbH + Co. KG

79224 Umkirch · Germany
Tel. +49 7665 9802-0
info@klsmartin.com

Stuckenbrock Medizintechnik GmbH

78532 Tuttlingen · Germany
Tel. +49 7461 165880
verwaltung@stuckenbrock.de

Rudolf Buck GmbH

78570 Mühlheim · Germany
Tel. +49 7463 99516-30
info@klsmartin.com

KLS Martin France SARL

68000 Colmar · France
Tel. +33 3 8921 6601
france@klsmartin.com

Martin Italia S.r.l.

20059 Vimercate (MB) · Italy
Tel. +39 039 605 6731
italia@klsmartin.com

Martin Nederland/Marned B.V.

1270 AG Huizen · The Netherlands
Tel. +31 35 5234538
nederland@klsmartin.com

Nippon Martin K.K.

Osaka 541-0046 · Japan
Tel. +81 6 62289075
nippon@klsmartin.com

KLS Martin L.P.

Jacksonville, FL 32246 · USA
Tel. +1 904 641 7746
usa@klsmartin.com

Gebrüder Martin GmbH & Co. KG

Representative Office
121471 Moscow · Russia
Tel. +7 (499) 792-76-19
russia@klsmartin.com

Gebrüder Martin GmbH & Co. KG

Representative Office
201203 Shanghai · China
Tel. +86 21 2898 6611
china@klsmartin.com

KLS Martin

Representative Office Middle East
Dubai · UAE
Mobile: +971 (50) 248 3819
middleeast@klsmartin.com

Gebrüder Martin GmbH & Co. KG

A company of the KLS Martin Group

Ludwigstaler Str. 132 · 78532 Tuttlingen · Germany
Postfach 60 · 78501 Tuttlingen · Germany
Tel. +49 7461 706-0 · Fax +49 7461 706-193
info@klsmartin.com · www.klsmartin.com

